

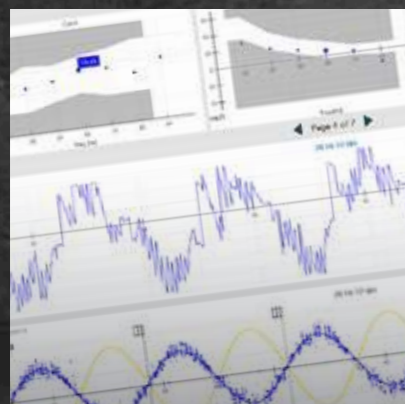
Micromedical VisualEyes™ 515/525 Orion Rotary Chair

Complete VNG
solution with rotary
chair for balance
assessment

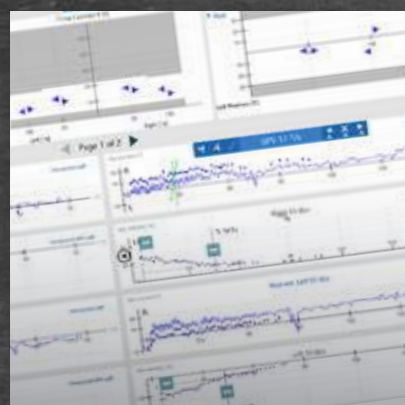


**Micromedical
by Interacoustics**

Rotational vestibular chair



SHA test summary view



Step test edit slopes

The reliability of the clinical information attained under the precisely controlled environment of the Orion rotary chair provides clinicians with the unique opportunity to accurately assess the Vestibular Ocular Reflex (VOR) efficiently and economically.

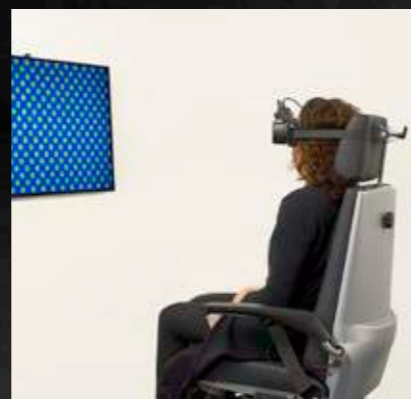
With the chair in the 90 degree upright position, the clinician can complete the following tests

SHA VOR tests:

- VOR 0.01 to 0.64 Hz (20 d/s to 100 d/s)
- Visual VOR
- VOR Suppression
- Velocity Step Test (50 d/s to 200 d/s)

With the VisualEyes™ 525 Oculomotor option:

- Smooth Pursuit
- Saccade
- Optokinetic
- Gaze



A full test battery

A full test battery is included with the chair, including the sinusoidal pendular test and step rotation test.

Rotational chair testing is more sensitive to bilateral vestibular losses than caloric testing alone. It is the gold standard test for the assessment of patients with a compensated unilateral lesion or with bilateral vestibular lesions (e.g. ototoxic damage).

The gold standard
Rotational testing is the gold standard for bilateral weaknesses identified in caloric and vHIT testing

We have taken our decades of experience in the design and manufacturing of our rotational chairs to the ultimate in clinical efficiency. The reclining rotational chair completes the standard rotational chair testing protocols, then reclines for caloric and positional testing.

Space-saving design

The chair allows you to carry out all tests in a minimum of space. In addition to rotation tests, it reclines precisely to 30 degrees for caloric testing with easy access to both ears. It also reclines completely to act as an exam table for positional and Dix-Hallpike tests.

Recline to zero degrees for positional tests

Recline the chair flat for positional tests and remove the head rest to complete Dix-Hallpike testing. The full supine position also facilitates canalith repositioning maneuvers.

Recline to 30 degrees for caloric testing

With the chair reclined to 30 degrees, it is set for caloric test protocols. VisualEyes™ software integrates either the AirFx air caloric irrigator or AquaStim water caloric irrigator for computer controlled caloric stimulations.



Recline to 30 degrees for caloric testing

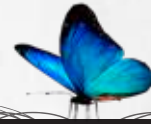


For added safety a brake button assures stability when the seat back is reclined.



To assure a correct angle for caloric testing, an indicator resides on the side of the chair.





Interacoustics

Interacoustics is a world leading provider of diagnostic solutions in the field of hearing and balance assessment. Since 1967 we have designed and manufactured our innovative diagnostic solutions for the world of audiology with a constant focus on providing our customers with quality, dependable products.

With you at all times

We operate in over 100 countries worldwide through a carefully selected network of distributors and service centres. Purchasing an Interacoustics product guarantees not only a quality product, but also direct access to our highly professional training and support service.

Product specifications

All technical and hardware specifications concerning the VisualEyes™ and Orion rotary chair can be downloaded from our website.

Read more at
interacoustics.com

Go online to
explore our
full product
range



Interacoustics A/S

Audiometer Allé 1
5500 Middelfart
Denmark

T +45 6371 3555
F +45 6371 3522

info@interacoustics.com
interacoustics.com

